



**HOLIDAY HOMES | COTTAGES | LODGES
& HOLIDAY HOME OWNERSHIP IN SOUTH WALES**

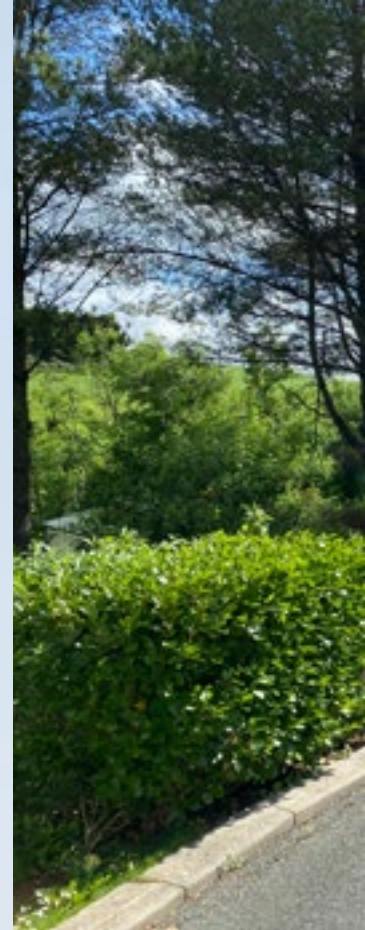


SAUNDERSFOOT | TENBY | LITTLE HAVEN | LAUGHARNE | PORTHCAWL



CONTENTS

Park Location Map	04
Beautiful Pembrokeshire	05
Sunny Glen Holiday Park Small and quiet with only 8 caravans	07
Our Accommodation at Sunnyvale A guide to find your perfect holiday home	08/09
Hot Tub Holidays Treat yourself to one of our stunning hot tub holidays	10
Vineyard Vale Our stunning detached 3 and 4 bedroom cottages	12/13
Our Brampton Lodge Private hot tub luxury	14
Our Apartment @Sunnyvale Our new 4 bedroom apartment	15
Holiday Home Ownership	18/19
Myrtle Holiday Park The perfect base to explore Pembrokeshire	20/21
Trefalun Holiday Park Close to all the attractions its perfect for family time	22/23
Ants Hill Holiday Park The beauty of Laugharne on your doorstep	24/25
Howelston Holiday Park Uninterrupted views across St Brides Bay	26/27
Kenfig Pool Holiday Park Next to the Kenfig National Nature Reserve Porthcawl	28/29



16/17

Entertainment

We provides live entertainment for the whole family at the Stars Clubhouse at Sunnyvale and Ants Hill.





06

Sunnyvale Holiday Park

Discover our park in gorgeous Saundersfoot



11

Valley Grove Bungalows

Relax in your own private hot tub in our tranquil bungalows. Many of which are pet friendly.



30/31

Nottage Park Lodges

Our stunning development of luxury lodges in Porthcawl. Certain to be the finest address in South Wales



Welcome

to the Sunnyvale Holiday Group

Where family's come together

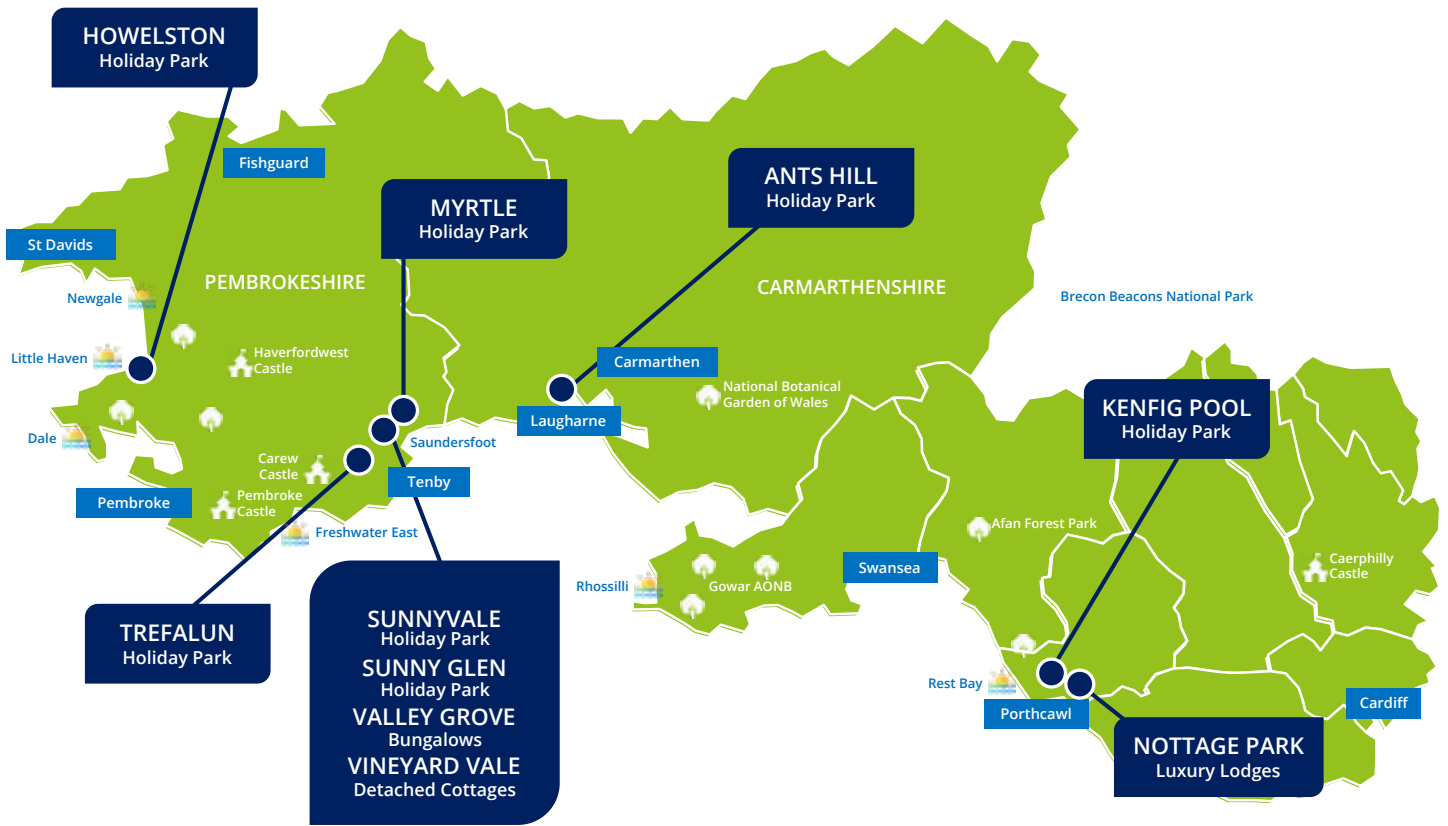
The best holidays last forever. Because it's not just the things you do, the places you visit and the new friends you meet that make them special. It's the memories you take away with you.

At the Sunnyvale Holiday Group we've been creating those memories for over 30 years. Year after year, generation after generation, families come back to us to live them all over again. It's easy to see why a Sunnyvale holiday or a holiday home is an escape from the pressures of everyday life. A time to enjoy being together and where all-out, full-on family fun is the order of the day.

Perhaps you're looking for a holiday home the whole family can enjoy year after year or a quiet couple's hideaway. There's something for everyone in our wide choice of lodges and caravans for sale. This brochure guides you through our stunning locations.

We're a family company ourselves, and we've invested our lives in making sure every family that visits us has an unforgettable time. You can see it in the wonderful coastal and countryside locations we've chosen for our holiday parks. In the facilities, from the play areas and pools (indoors and out) to the grounds and evening entertainment.

The Deakin Family
and all the staff at
The Sunnyvale Holiday Group



CHOOSE YOUR PERFECT LOCATION



BEAUTIFUL PEMBROKESHIRE

Lapped by sea on three sides, Pembrokeshire has the perks of an island, as well as the cultural riches befitting a dramatically scenic corner of South West Wales. An area of outstanding natural beauty.

Here, where the road ends, numerous diverse strands come together: sea and mountain, art and history, Celtic and Anglo-Saxon influences, and year-round opportunities for adventure and relaxation.

This extraordinary synthesis attracts free thinkers and creative types of all sorts, beguiling all of us who are proud to call this remarkable place our home, and most of our visitors too.

Not surprisingly, with a deep connection to the ocean, Pembrokeshire is a haven for exhilarating water sports, spectacular coastal walks and the freshest seafood.

Our landscape is protected by the unique Pembrokeshire Coast National Park, where along its shores you'll find the Pembrokeshire Coast Path. The 186 miles of meandering trail visits coves and harbours, over 50 beaches, through vibrant towns and villages, brimming with life, culture and creativity, oh yes and the smallest city in Britain: St Davids.

Away from the coast, Pembrokeshire is fantastic for family holidays - there's no end of choice; adventure parks, castles, boat trips and family festivals, they are just some of the things to do and events that will lift your spirits and create lasting memories.



FACILITIES ON PARK



Holiday Home Ownership



Stars Clubhouse
(Feb to Oct inclusive)



Games Room



Indoor Heated Swimming Pool



Reception



Patch Panda Club



Bar Meals



Dog Walk



Wifi* (Extra Charge)



24hr Launderette



Kids Play Area



Takeaway Food

SUNNYVALE HOLIDAY PARK

HOT TUB
HOLIDAYS



Sunnyvale is a picture of well-kept green lawns with an abundance of colourful shrubs and mature trees, whilst the entertainment complex and drinks patio is a delight to view with raised flower beds and stunning hanging baskets.

Sunnyvale has won numerous prizes in the Saundersfoot in Bloom Competition.

The Wales Tourist Board has also given us a 4-star excellent grading for the Park and its facilities.

There is a choice of 53 caravans offering value for money family holidays.

Pets are welcome (in certain class caravans only) provided they are kept on a lead and sleep on a blanket or basket supplied by you.

Sunnyvale is ideally located less than one mile from Saundersfoot and approximately 3.5 miles from Tenby both offering outstanding beaches. A local bus service stops alongside the Park entrance and travels to Tenby and Saundersfoot twice every hour throughout the summer.





FACILITIES AT SUNNYVALE



Stars Clubhouse
(Feb to Oct inclusive)



Games Room



Indoor Heated
Swimming Pool



Reception



Patch Panda Club



Bar Meals



Dog Walk



Wifi* (Extra Charge)



24hr Launderette



Kids Play Area



Takeaway Food

SUNNY GLEN HOLIDAY PARK



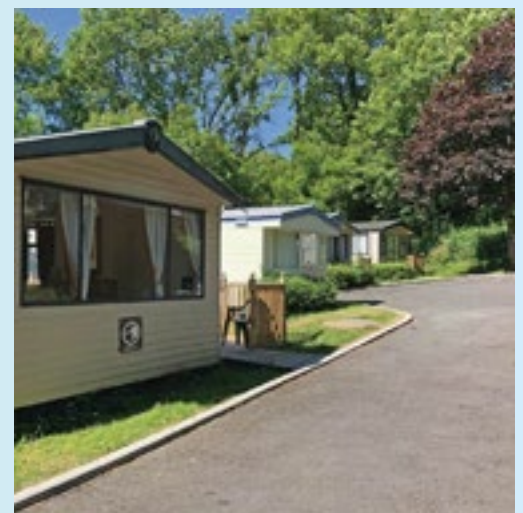
Sunny Glen Holiday Park is our secluded tree lined tranquil park with just 8 caravans. The park is situated 200 yards from our Sunnyvale main park, where you can enjoy all the excellent facilities.

Saundersfoot beach (just over a mile away) is a large south-east facing, golden, sandy beach. The shallow water and nearby village facilities make the beach popular with families. The harbour offers the opportunity to take fishing and sightseeing trips along the Pembrokeshire coastline.

There are plenty of pubs and cafés in the village and around the harbour with ample parking near the beach both on the harbour side and behind the shops.

Also a must see is the Wales International Coastal Centre at Saundersfoot Harbour, folded neatly into the Pembrokeshire Coast National Park & is one of the most beautiful harbours in UK and one of the most delightful of hidden gems on the Welsh Riviera

Sunny Glen is your perfect base for exploring the area.



ACCOMMODATIONS:

PINE



AVAILABLE AT: SUNNYVALE

Year of origin: 2022

Sleeping Arrangements:

2 Separate bedrooms -one double room and one twin.

Fold out bed in the lounge.

Additional Information:

Luxury caravan with LED television.

Linen and bedding is provided.

D/Glazed & C/Heated.

Sorry pets are not allowed



OAK



AVAILABLE AT: SUNNYVALE

Year of origin: 2019

Sleeping Arrangements:

2 Separate bedrooms -one double room and one twin.

Fold out bed in the lounge.

Additional Information:

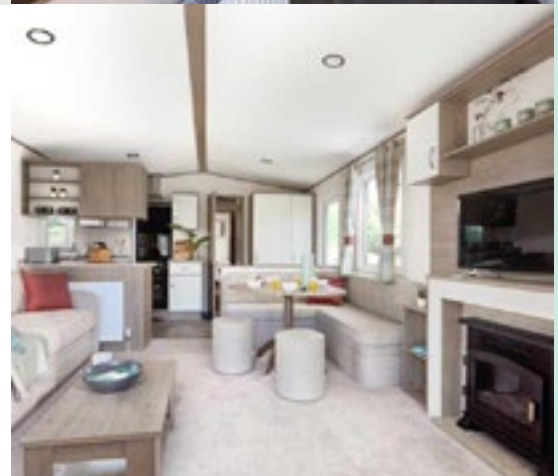
Luxury caravan with LED television.

Linen and bedding is provided.

D/Glazed & C/Heated.

Outside decking with countryside views.

Sorry pets are not allowed



BIRCH



AVAILABLE AT: SUNNYVALE & SUNNY GLEN

Years of origin: 2021 & 2022

Sleeping Arrangements:

3 Separate bedrooms -one double room and two twins. Fold out bed in the lounge.

Additional Information:

Luxury caravan with LED television.

Linen and bedding is provided.

D/Glazed & C/Heated.

Outside decking

Sorry pets are not allowed



PALM



AVAILABLE AT: SUNNYVALE & SUNNY GLEN

Year of origin: 2017

Sleeping Arrangements:

2 or 3 Separate bedrooms -one double room and 1 or 2 twins. Fold out bed in the lounge.

Additional Information:

Luxury caravan with LED television.

Linen and bedding is provided.

D/Glazed & C/Heated.

Outside decking on the 8 berth.



ELM



AVAILABLE AT: SUNNYVALE

Year of origin: 2013

Sleeping Arrangements:

2 or 3 separate bedrooms -one double room and one or two twins.

Fold out bed in the lounge.

Additional Information:

Luxury caravan with LCD television.

Linen and bedding is provided.

D/Glazed & C/Heated.

Sorry pets are not allowed



BEECH



AVAILABLE AT: SUNNYVALE

Year of origin: 2016

Sleeping Arrangements:

3 separate bedrooms -one double room and two twins.

Fold out bed in the lounge.

Additional Information:

Luxury caravan with LCD television.

Linen and bedding is provided.

D/Glazed & C/Heated.



WILLOW



AVAILABLE AT: SUNNYVALE

Year of origin: 2011

Sleeping Arrangements:

2 or 3 separate bedrooms -one double room and one or two twins.

Fold out bed in the lounge.

Additional Information:

Luxury caravan with LCD television.

Linen and bedding is provided.

D/Glazed & C/Heated.

Patio with furniture alongside.



CEDAR



AVAILABLE AT: SUNNYVALE

Years of origin:

2008² bed 2015³ bed

Sleeping Arrangements:

2 or 3 separate bedrooms -one double room and one or two twins.

Fold out bed in the lounge.

Additional Information:

Caravan with LCD television.

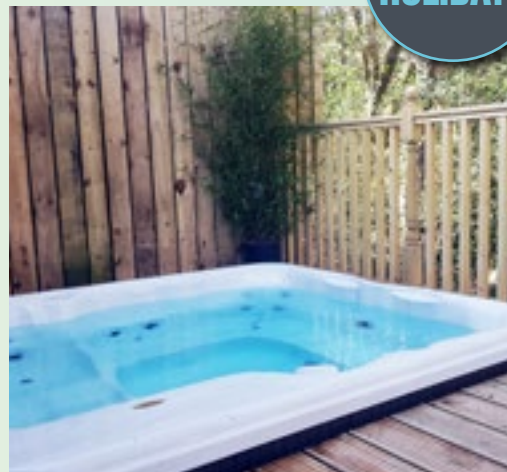


ACCOMMODATIONS:

HOT TUB HOLIDAYS

the ultimate relaxation

HOT TUB
HOLIDAYS



Escape the ordinary and treat your family to a truly unforgettable holiday in one of our luxurious accommodations. Each carefully selected property boasts its own private decking area, where you can unwind in style and comfort within your very own top-of-the-range Jacuzzi.

We offer a diverse range of accommodations to suit every taste and party size:

Teak

This stunning three-bedroom option is ideal for families seeking a spacious and comfortable retreat.

Valley Grove Bungalows

Enjoy open-plan living at its finest in our pet-friendly Valley Grove Bungalows.

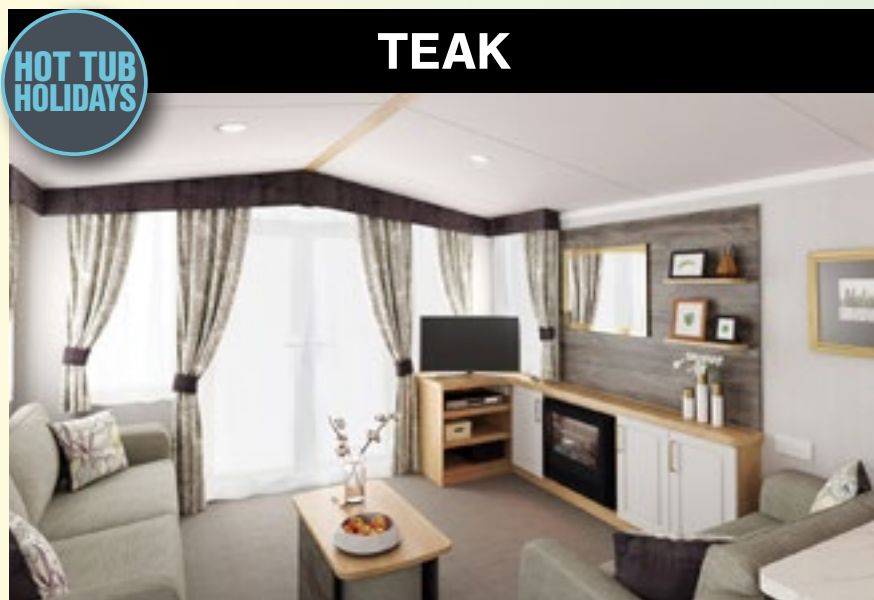
The Brampton Lodge

Perfect for families or groups of friends, our spacious Brampton Lodge offers the ultimate in luxury and comfort.

Vineyard Vale House

Experience the epitome of privacy and relaxation with a covered outdoor hot tub in your secure garden.

Unwind, Relax, Repeat. Ready to discover your perfect hot tub getaway? Look out for the Hot Tub Holiday symbol throughout this brochure to find your ideal accommodation.



**AVAILABLE AT: SUNNYVALE
& SUNNY GLEN**

Year of origin: 2019

Sleeping Arrangements:

3 Separate bedrooms
-one double room and two bedrooms.
Additional fold out bed in the lounge.

Additional Information:

Modern luxury caravan
Linen and bedding is provided.
D/Glazed & C/Heated.
Outside decking with private hot tub.

Sorry no pets



FACILITIES AT SUNNYVALE

-  Stars Clubhouse
(Feb to Oct inclusive)
-  Games Room
-  Indoor Heated
Swimming Pool
-  Reception
-  Patch Panda Club
-  Bar Meals
-  Dog Walk
-  Wifi* (Extra Charge)
-  24hr Launderette
-  Kids Play Area
-  Takeaway Food

VALLEY GROVE BUNGALOWS

Valley Grove Bungalows are located opposite the entrance to Sunny Glen Holiday Park, just 200 yards down the road from Sunnyvale. All the facilities at Sunnyvale, including the clubhouse with nightly entertainment, indoor heated swimming pool and much more are available free of charge to Valley Grove guests. Valley Grove consists of 10 semi-detached bungalows, all with ample parking. We have 3 types of accommodation at Valley Grove:

Sleep 4 Bungalow:

Lounge diner with television and electric fire. A well equipped kitchen with cooker, microwave, fridge, kettle and toaster. A family bathroom with shower, toilet and wash basin. One double master bedroom. The 2nd bedroom has 2 single beds.

Sleep 5 Hot Tub Bungalow:

Lounge diner with television and electric fire. A well equipped kitchen with cooker, microwave, fridge, kettle and toaster. A family bathroom with shower, toilet and wash basin. One double master bedroom. The 2nd bedroom has 1 single bed and full sized bunk beds. To the rear there is private decking and hot tub.

Our sleep 5 bungalows are pet friendly

Sleep 6 Bungalow:

Large lounge with television. Full gas central heating. Kitchen/dining room with oven, hob, microwave, fridge freezer, kettle, toaster and dishwasher. A bathroom with full sized bath, shower and toilet. Three bedrooms, two are doubles with one en-suite and one is a twin.



Pets are welcome in our Hot Tub Bungalows, but not in our Sleep 4 & 6 Bungalows



VINEYARD VALE

DETACHED HOLIDAY HOMES

Our stunning cottage and house are located just across the road from the main Sunnyvale entrance. The traditional Vineyard Vale sleep 8 cottage, and the modern Vineyard Vale sleep 6 house. Both have private gardens, and ample parking.



OUR SLEEP 6 HOUSE:

HOT TUB HOLIDAYS

This stunning detached house has everything a family could want. In the secure private garden is your luxury hot tub, ready for you to truly relax.

There is a large lounge with reclining leather chairs and large TV.

The kitchen has a stunning island where you can come together as a family, plus all the facilities to cook some fabulous family meals. A separate utility room with washing machine and storage for all those beach toys. There are 2 double bedrooms and one twin. The main bathroom had a full sized bath and walk in shower.

Bed Linen is provided





FACILITIES AT SUNNYVALE



Stars Clubhouse



Games Room



Indoor Heated Swimming Pool



Reception



Patch Panda Club



Bar Meals



Dog Walk



Wifi* (Extra Charge)



24hr Launderette



Kids Play Area



Takeaway Food

OUR SLEEP 8 COTTAGE:

This stunning traditional stone 4 bedroom cottage with large secure garden is a family favourite.

Downstairs there is a lovely fully fitted modern kitchen with garden views. A full dining table and chairs links the kitchen to the open plan living room areas giving everyone the space to spread out. Also on the ground floor is a stunning family bathroom and 2 bedrooms, both doubles.

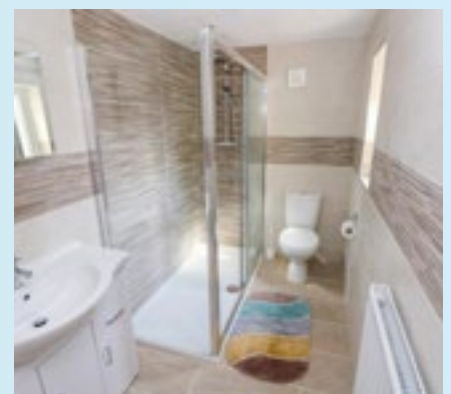
Upstairs are 2 twin bedrooms and a 2nd family bathroom with a bath.

Outside is a large grassed garden, patio area and private driveway.

Bed linen is provided



Sorry no pets are allowed at Vinyard Vale House or Cottage





FACILITIES ON PARK

-  Stars Clubhouse
(Feb to Oct inclusive)
-  Games Room
-  Indoor Heated Swimming Pool
-  Reception
-  Patch Panda Club
-  Bar Meals
-  Dog Walk
-  Wifi* (Extra Charge)
-  24hr Launderette
-  Kids Play Area
-  Takeaway Food

OUR BRAMPTON LODGE

Brand new for 2021. A stylish and affordable family holiday lodge with two twin bedrooms and one double.

Boasting three elegantly appointed bedrooms, the Brampton Lodge can comfortably accommodate up to six guests, making it an ideal choice for families or small groups seeking a luxurious retreat. An en-suite and walk-in wardrobe serve the master bedroom providing a little holiday luxury.

The heart of the lodge is its stylish open-plan kitchen, equipped with top-of-the-line integrated appliances, including a dishwasher, washing machine, fridge/freezer, and an indulgent wine cooler.

Adjacent to the kitchen, the dining area invites guests to savour memorable meals together, comfortably seating six and complemented by additional

seating at the breakfast bar, perfect for casual dining or enjoying a morning coffee.

Be sure to enjoy the private decking with your very own Hot Tub.

The Lodge is very well equipped with crockery and cutlery. Towels and bedding are provided.



Sorry no pets are allowed in The Brampton Lodge



FACILITIES ON PARK

-  Stars Clubhouse
(Feb to Oct inclusive)
-  Games Room
-  Indoor Heated
Swimming Pool
-  Reception
-  Patch Panda Club
-  Bar Meals
-  Dog Walk
-  Wifi* (Extra Charge)
-  24hr Launderette
-  Kids Play Area
-  Takeaway Food

OUR APARTMENT @SUNNYVALE

Unwind in Luxury at Our New Apartment

Discover your perfect family escape in our stunning new apartment, ideally located on the heart of Sunnyvale's main park. Enjoy easy access to all the park's amenities, right on your doorstep.

This spacious two-floor maisonette offers ample room for everyone. Unwind in one of four bedrooms - three doubles and a twin - each with its own TV for ultimate relaxation. The upper floor boasts a luxurious master bedroom and a twin, plus a contemporary bathroom with a walk-in shower. Downstairs, you'll find an additional toilet and an ensuite bathroom to one of the two double bedrooms for added convenience.

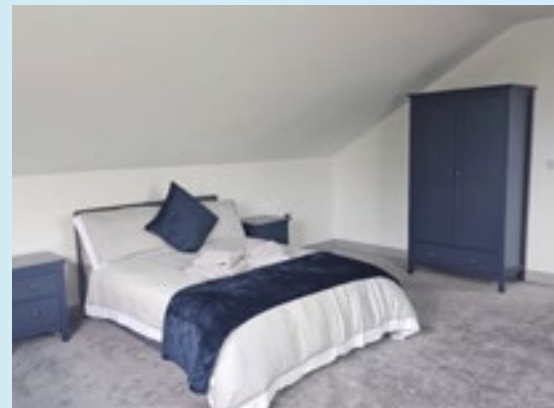
Create delicious meals in the modern, fully equipped kitchen featuring

an American-style fridge-freezer, dishwasher, and full-size oven. Gather around the dining table for family meals, then let the kids loose in the dedicated games room, complete with an arcade machine, large TV, and games console.

Please note: Our apartment is located on the first and second floors and requires the use of stairs.



Sorry no pets are allowed in
The Apartment



LET US ENTERTAIN YOU

Sunnyvale provides nightly live entertainment in the Stars Clubhouse ALL FOR FREE.

During the early part of the evening Kids Club meets for games and activities. Membership of the Kids Club is free and each child will receive a members booklet and plenty of chances to win special edition Patch t Panda Medals.

Although the club will be geared to the 4-11 year old age group, exceptions will be made. Patch the Panda will join in the activities, and he will be happy to show you all the dance moves to all of the popular dance tunes. Children are in for a fantastic time here at Sunnyvale so bring them along to the clubhouse each evening.

Also in 'Stars'; we will continue with our very popular quizzes, competitions and karaoke evenings with chances of winning FREE holidays. We also will be showing live selected sporting events throughout the year on the televisions around the club.

We kick off the evening with special games and activities for the children - when the Kids Club meets. The children are more than welcome to remain with their parents until the end of the evening to enjoy the rest of the entertainment, including the ever popular Cash Bingo - fun for all members of the family.

The rest of the evening will include theme nights, comedy game shows, adult fun competitions, disco music to suit all ages and quizzes. Throughout the week top quality cabaret acts will be visiting with their own entertainment styles - vocalists, duos, comedians, magicians, groups and much more.

We will continue with our very popular General Knowledge and Musical Quizzes and Karaoke Evening.

*Sunny Glen, Valley Grove and Vineyard Vale guests are welcome to visit 'Stars' Entertainment Complex and Indoor Pool at Sunnyvale.

It may be necessary to amend or withdraw certain facilities according to demand. Therefore we reserve the right to alter or withdraw amenities or facilities or any part of the activity programme, either as advertised or previously available without prior notice.



Hi Kids. I'm Patch t' Panda. welcome to Sunnyvale. Make sure you come along to kids club every night to receive your stamp and win fantastic prizes.

You get one stamp each night for just coming along! Also you can collect loads more by winning certain games and competitions during the club.

If you reach a score to win a medal make sure you hand in your card and you will be called on stage during our presentation to collect your medal!! Have fun guys. see you there!!!!

Don't worry if you don't get enough stamps on this visit. Just bring your card next time you come and you can carry on collecting!!

Good Luck!!



HOLIDAY HOME OWNERSHIP

Wouldn't it be lovely to go on holiday every single weekend?

And when you arrive, everything you need is already there! All your clothes and favourite things are ready and waiting. Your favourite wine is already chilled in the fridge, the book you started last weekend is there. The kid's toys are all there, their favourite blankets are on their beds and their best PJs and bedtime stories are there waiting.

Even the dog has a little bed waiting by the fire with his ball and bone inside. You know all your neighbours and they greet you with a friendly wave and a smile. They ask how your week was and you all agree you're happy to be back on holiday.



Whether you're looking for a holiday home the whole family can enjoy year after year or a quiet couple's hideaway, there's something for everyone in our wide choice of lodges and caravans for sale.



If you decide you want to join us and our owners' community, you'll have a choice of pitch locations around our parks to suit you. -Whether you prefer a quieter life or a bit of buzz, we've got something for everyone. Owners' privileges make life on park a dream come true. Being part of a friendly community of owners entitles you to enjoy a wide range of exclusive benefits to make your time on park even more special. Some of the options open to you as an owner: Owners Discount Card - enjoy an extra 10% spending power in our Stars Clubhouse at Sunnyvale.



Understand the costs:
We have something to suit every taste and budget. The deposits are from £3000 and that will secure your perfect pitch and holiday home. You'll need to factor in your site fees too. We can help you decide what is the best for you and we will always set the cost out clearly from the start of the process

Choosing a holiday home:

We have holiday homes to suit all sorts of families with all kinds of requirements - whether you're looking for an entry-level model or a luxury lodge. If you're looking to buy used caravan, we've got them too and prices start from £19995. We can also source you a holiday home if we don't have exactly what you want in stock.

Arrange a visit:

Before you buy a holiday home at one of our parks, we want you to come and see our park and make sure it's perfect for you, then you can select a spot to suit you, for your holiday home.

Personal service:

You will work with the same member of our sales team from start finish, with a direct number to ask them any questions you can think of. We will be there for any visits or virtual tours and always on hand throughout the buying process. We have a team dedicated to helping you get the numbers right. The sales team have the experience and understanding to make sure you buy the right holiday home at a price you can afford.



MYRTLE

Broadmoor, Pembrokeshire

Myrrtle is an attractive six acre holiday park it abounds with established trees and flowering shrubs. Located just off the A477 in the village of Broadmoor. Its perfect for exploring Pembrokeshire! Saundersfoot is just 2 miles away and Tenby only 4 miles away. In any and every direction from this tranquil holiday park, you can set off to enjoy unspoilt woodland walks, medieval castles, pristine beaches, and the simple pleasure of discovering something new around every corner.

It's the perfect base for planning your holiday adventures... An action-packed day with the family at Heatherton World of Adventure (5 miles away) or for enjoying a rest day and a spot of fishing on the banks of the nearby Amroth beach while the sunlight dances on the water.

On Site Facilities Include: Stars Club with Family Bar, and over 18's Snooker room, & play area. The Stars club is open every Friday and Saturday evening and for longer periods during school holidays and bank holidays With live entertainment on selected weekends, plus cash bingo, raffles and much more, the Stars club is the perfect place to catch up with friends. In addition Myrtle guests may use the Stars clubhouse at Sunnyvale which offers free entertainment every evening, cabaret 2/3 times a week for adults and children and heated indoor swimming pool (open February - November)

FACILITIES ON PARK



Holiday Home Ownership



Stars Clubhouse



Kids Play Area



Dog Walk



Wifi* (Extra Charge)



Established Grounds



Saundersfoot



**“ It’s the
perfect
base for
planning
your holiday
adventures**



*your peaceful, quiet and
relaxing escape*

TREFALUN

St Florence, Pembrokeshire

Trefalun Park is family run and prides itself on a personal and friendly service with many families holidaying year after year. Set within 11 acres, where it nestles in part of Pembrokeshire's finest scenery, the Park offers a quiet countryside setting for a relaxed and enjoyable caravanning holiday.

The sheltered, level, well kept grounds provide ample space for all, and children can delight in the safety of the enclosed play area. Dogs are welcome at Trefalun Park and a special exercise area is provided for them.

There aren't many places where you can see Tigers, Rhinos, Red Pandas, and Gibbons at the end of the road! --Manor Wildlife Park is bound to become a family favourite. There's just so much going on in the surrounding areas. Opposite the park are the thrills of Heatherston with more than 30 exciting activities on one site. A fantastic day out for all ages! You can even bring your four-legged friend to try the dog agility course? Maybe you fancy exploring nearby Tenby? Or a visit to the magnificent medieval Pembroke Castle where Henry VII was born? Trefalun Park has everything on the doorstep.

Trefalun has some fantastic developments planned. We are building a lake where your holiday home will have tranquil views across its gleaming reed edged waters. There's South View where you get sun from your breakfast coffee to evening G&T. Central Park development will be the heart of everything where your neighbours wave to welcome you back home.

FACILITIES ON PARK



Holiday Home Ownership



Seasonal & Nightly Touring Caravans Welcome



Motorhomes Welcome



Camping Welcome



Reception



Showers & Accessible Showers



Dishwash Room



24hr Launderette



Kids Play Area



Tenby



“ Set within
11 acres,
where it
nestles in
part of
Pembrokeshire’s
finest scenery



*the ideal base for
family holidays*



ANTS HILL

Laugharne, Carmarthenshire

Apparently, the name originates from a comment Oliver Cromwell made during the Civil War when, some distance away, he looked up at the hill and seeing his men declared they looked like ants on the hill! Today Ants Hill is a friendly family park situated in the stunning countryside of South West Wales with peaceful & pleasing rural views. We have a gorgeous outdoor swimming pool for you and your family to relax and while away the sunshine in. Our newly renovated Stars Clubhouse has bingo, karaoke and entertainment for everyone to enjoy.

The park is within walking distance of the historic township of Laugharne, which is famous for Laugharne Castle and Welsh poet Dylan Thomas who did much of his writing in the. '...sea-shaken house on a breakneck of rocks'. The Township holds events such as the Laugharne Festival, Carnival week and a Regatta. Ants Hill is also only a short drive from the scenic coastline and award winning beaches. Land speed records were made, broken and re-made at Pendine Sands. On the eight mile sandy beach thrill seekers can try land yachting, kite buggying and power kiting. Water babies can explore the waves on a sea kayak or Stand Up Paddleboard, while romantics can gallop along the beach at sunset on a horse-riding tour. Plus country walks, river and sea fishing, and many other activities are all close at hand.

We also cater for seasonal touring caravans. The touring area offers spacious pitches all with electric hook-up points.

FACILITIES ON PARK



Holiday Home Ownership



Seasonal & Nightly Touring Caravans Welcome



Motorhomes Welcome



Camping Welcome



Stars Clubhouse



Games Room



Outdoor Heated Swimming Pool (May-Sep)



Reception



Bar Meals



24hr Launderette



Kids Play Area



Takeaway Food



Showers & Accessible Showers



Baby Change



Dishwash Room



Laugharne Castle



**“relax and
while away
the sunshine
in our beautiful
outdoor pool**



*enjoy your time,
at your own pace*

HOWELSTON

Little Haven, Pembrokeshire

Howelston is in the Pembrokeshire village of Little Haven and overlooks St Brides Bay. Our park offers an unrivalled position in a truly stunning part of Wales. The quaint village of Little Haven is an old fishing village with a good deal of charm and character and plenty of choices for food and drink. The Pembrokeshire Coast National Park Authority has designated Little Haven as a conservation area.

Our park has stunning views across St Brides Bay and being located next to the Pembrokeshire Coast Path we are perfectly located for people wanting to explore this stunning part of Wales. At Howelston we also have facilities for touring caravans & motor-homes. Our unrivalled location is a popular destination for scuba divers to use as a base. Surfers will also delight with St Brides Bay having some of the best surfing beaches for both experts and beginners.

From Howelston Holiday Park you are within easy reach of Haverfordwest, Milford Haven, St. David's, Fishguard and Cardigan.

Howelston guests are additionally invited to use the facilities at Sunnyvale Holiday Park (approximately 23 miles away) with heated indoor swimming pool, the Stars Club, which includes nightly entertainment.

FACILITIES ON PARK



Holiday Home
Ownership



Seasonal & Nightly
Touring Caravans
Welcome



Motorhomes
Welcome



Camping Welcome



Showers &
Accessible Showers



Stunning Views



Broad Haven Beach



“ Our park offers an unrivalled position in a truly stunning part of Wales



get away from it all and enjoy the views



KENFIG POOL

Kenfig Hill, Porthcawl, Bridgend

Kenfig Pool is our delightful park next to the Kenfig Pool National Nature Reserve. Our park enjoys commanding views across the 70 acre and the second largest freshwater lake in south Wales. Kenfig Nature Reserve is one of the UK's most important wildlife conservation sites. Also it is one of Wales's top sand-dune reserves, with plants like wild fen orchids, birds and insects depending on this habitat for their survival. The reserve is a favourite refuge for wild-fowl all year round. The area is very popular with birdwatchers, photographers, walkers, and families. It is one of the few places in the UK where the bittern can be seen during the winter.

Catch your breath at Porthcawl, anytime of year. Get adventurous at the new Watersports Centre, or test your skills at one of the world's finest golf courses, Royal Porthcawl. Enjoy funfair rides, ice cream and spectacular sunsets in summer, or cosy up in a seafront café after a winter walk along the beach. Just behind the seafront Esplanade, you'll find an exciting range of independent shops and cafés, alongside high street brands. On the harbour is the RNLI station and Wales' oldest listed bonded warehouse, the Jennings Building, which is now a bustling waterside spot with cafés and restaurants. Celebrated as one of South Wales' most popular holiday resorts. If it's beaches you're looking for, you've come to the right place - Porthcawl boasts not one, but seven magnificent beaches! From peaceful, sheltered bays to expanses of white, powdery sand filled with water sports, amusements and more, you'll be spoilt for choice.

With is so much do to in the area Kenfig is the perfect base for your very own holiday home.

FACILITIES ON PARK



Holiday Home Ownership



Launderette



Reception



Stunning Views



Kenfig Pool National Nature Reserve



“ we get there as often as we can. Its the perfect place to chill after a working week.



*surrounded by nature,
yet Porthcawl couldn't be closer*



NOTTAGE PARK

Luxury Lodges in Porthcawl, Bridgend

Luxury Lodge Accommodation Development in Porthcawl, South Wales that is one of a kind for the area. Surrounded by a golf course and countryside, Nottage Park will be a stunning development of 80 luxurious lodges.

We know that your holiday lodge is an escape from everyday life. It's your haven - a warm and comfortable place where you can relax with your loved ones. Your holiday begins from the moment you arrive, this is where memories are made and laughter is shared.

Nestled just outside Porthcawl, Nottage Park will be your perfect base. Its so easy to get to -less than 5 minutes from junction 37 of the M4 yet a world away from every day life. Here you can explore Porthcawl with its 7 stunning beaches. The shoreline is home to year-round surfing, blue-flag beaches and world-class golf. Find time for yourself in the magical nature reserves or climb the Big Dipper - the highest sand dune in Wales - for inspirational views.

Register your interest today nottage@sunnyvaleholidaypark.com



“ simply
the finest
address in
South Wales



CONTACT US TODAY:

**FOR HOLIDAY BOOKINGS AT SUNNYVALE, SUNNY GLEN, VALLEY GROVE AND VINEYARD VALE
PLEASE CONTACT US ON**

01834 814404

RESERVATIONS@SUNNYVALEHOLIDAYPARK.COM

WWW.SUNNYVALEHOLIDAYPARK.COM

WWW.TREFALUNPARK.CO.UK

WWW.ANTSHILL.CO.UK

WWW.NOTTAGEPARKLODGES.CO.UK

FOR HOLIDAY HOME SALES

PLEASE CONTACT OUR SALES TEAM DIRECTLY

07796 24 11 96

OWNER.EXCLUSIVE@SUNNYVALEHOLIDAYPARK.COM